



# *Business Profile*



**Rawha**

# **Rawha Enterprise**

**LOVE YOUR MOTHER  
&  
LOVE YOUR COUNTRY**

# RAWHA ENTERPRISE

## Table of Content

SL	Description	Page No.
1.	Company Information -----	1
2.	Chairman & Proprietor's Message -----	2
3.	Owner And Board of Advisors -----	3
4.	About Us -----	4
5.	Who We Are -----	4
6.	Why We Are -----	5
7.	Mission -----	5
8.	Vision -----	5
9.	Core Value -----	5
10.	Compliance -----	6
11.	Outstanding Client Service -----	6
12.	What We Do -----	6
12.1	Construction Materials Supplier -----	7
12.2	Labour Supply -----	8
12.3	Electrical & Power -----	9 - 10
12.4	Renewable Energy -----	11 - 14
12.5	Consultancy -----	15 - 16
12.6	Information Technology Enabled Services (ITES) -----	17 - 18
12.7	Networking -----	19
12.8	Safety & Security -----	20 - 22
13.	Organogram of Leadership Team -----	23
14.	Talented Team -----	23
15.	Quality Assurance -----	23
16.	Customer -----	24 - 25
17.	Our Expertise -----	26
18.	Professionalism -----	26
19.	Responsibility -----	26
20.	Teamwork -----	26
21.	Trust & Transparency -----	27
22.	On Time Delivery -----	27
23.	Client Satisfaction -----	27
24.	Our Future -----	27
25.	Office Address & Floor Space -----	27
26.	Owner Identification (Photo, NID, Signature & Company Seal) -----	28
27.	Company Legal Documents -----	
27.1	Trade License -----	29
27.2	Vat Registration Certificate -----	30
27.3	Income Tax Certificate -----	31
27.4	Bank Solvency Certificate -----	32

### Rawha Enterprise

+880 1716-381891

[www.rawhaenterprise.com](http://www.rawhaenterprise.com)

[rawhaenterprise@gmail.com](mailto:rawhaenterprise@gmail.com)

[info@rawhaenterprise.com](mailto:info@rawhaenterprise.com)

Road:19/3 , Kakrail,, House: Rahman Lucid Tower, Level: 3, Flat No: D-3, Kakrail,  
P.O.: Shantinagar, P.S.: Palton, Dhaka-1000.

## Company Information

### Registered Name

Rawha Enterprise

### Acronym Name

RE

### Trade License No

TRAD/DSCC/010621/2020

### VAT Registration Certificate

003275309-0208

### Income Tax Certificate

477865761557/Taxes Circle-16, Dhaka.

### Registered Address

House: Amena Villa, Holding No: 25/6, Area – Santibag,  
Santinagor Bazar, P. O.: Santinagor – 1217 Dhaka, Dhaka.

### Bank Details

Mercantile Bank PLC.

### Head Office

Road:19/3 , Kakrail,, House: Rahman Lucid Tower, Level: 3,  
Flat No: D-3, Kakrail, P.O.: Shantinagor, P.S: Palton, Dhaka-1000

### Store

House: 105/A, Level: 5, Block: J, Kakrail, Shantinagor, Ramna  
Dhaka – 1000

### Contact No

+880 1716-381897

### Email Address

info@rawhaenterprise.com rawhaenterprise@gmail.com

### Website

www.rawhaenterprise.com

## CHAIRMAN & PROPRIETOR'S MESSAGE



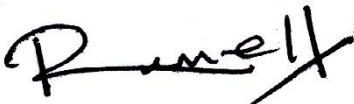
Dear Valued Clients, Partners, and Stakeholders,

It brings me immense pride and gratitude to mark the 15th year of Rawha Enterprise's journey—a journey defined by resilience, innovation, and a relentless pursuit of excellence. Since our humble beginnings, we have evolved into a multifaceted enterprise, offering a diverse range of services from Construction Materials Supply and Skilled Labour Provision, to cutting-edge solutions in Electrical & Power, Renewable Energy, and Information Technology.

Our firm belief is that sustainable development comes from a blend of strong foundations and forward-thinking. That's why we've invested not only in materials and manpower, but in future-focused sectors like Renewable Energy, IT Enabled Services (ITES), Software Development, and Cybersecurity. We take pride in being a reliable partner to governments, industries, and communities—delivering not just products and services, but trust and long-term value.


The road ahead is filled with exciting opportunities and new challenges. As we continue to grow, we remain committed to safety, quality, and customer satisfaction—values that have shaped our reputation over the years.

To our dedicated team, loyal clients, and valued partners: thank you for being an integral part of our success. Together, we look forward to building a smarter, safer, and more sustainable tomorrow.




Warm Regards,  
**Md. Sowmik Hawlader**  
**Chairman & Proprietor**  
**Rawha Enterprise**


### **Rawha Enterprise**

 +880 1716-381891

 rawhaenterprise@gmail.com

 Road:19/3 , Kakrail,, House: Rahman Lucid Tower, Level: 3, Flat No: D-3, Kakrail,  
P.O.: Shantinagar, P.S.: Palton, Dhaka-1000.

 [www.rawhaenterprise.com](http://www.rawhaenterprise.com)

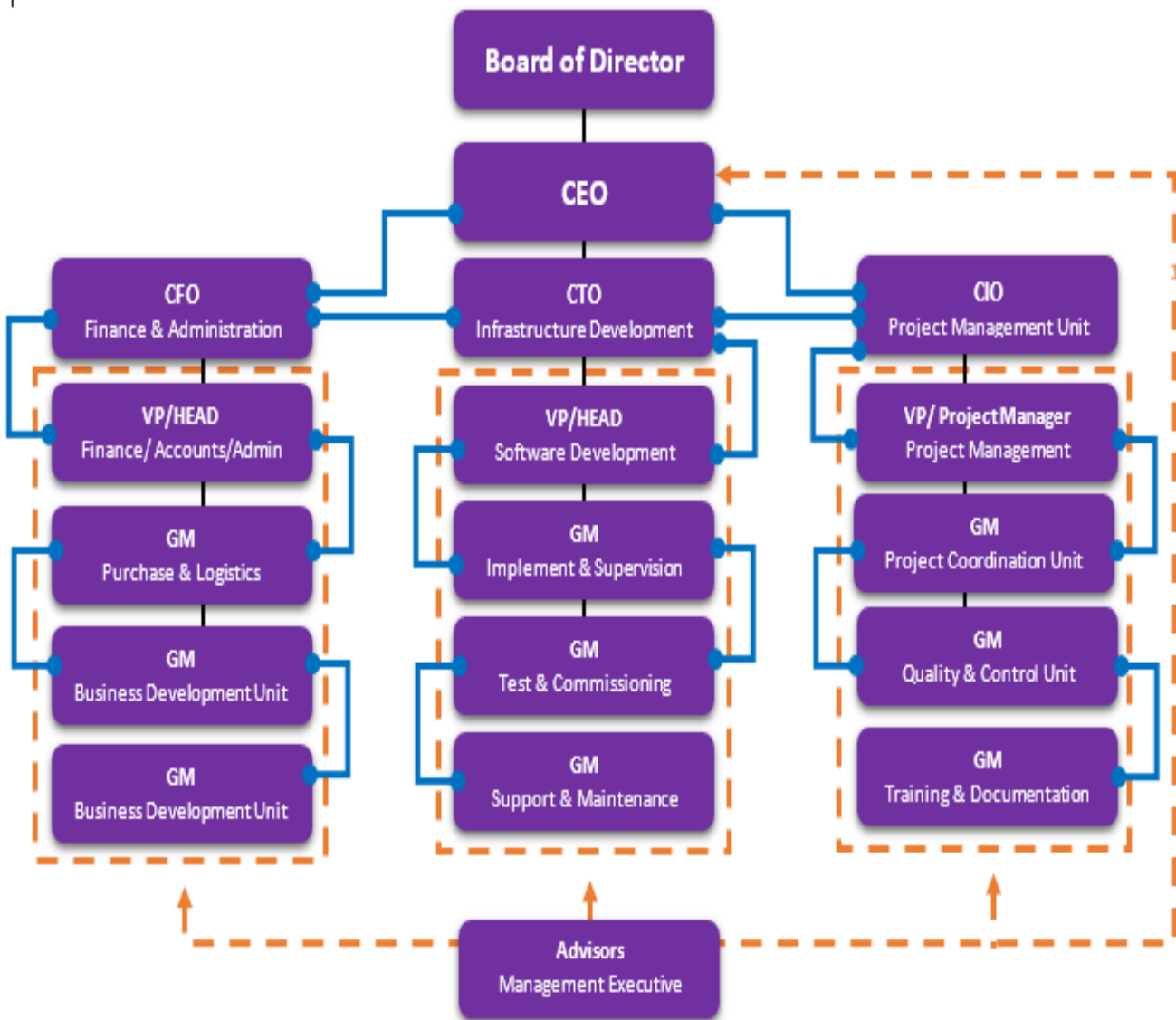
 [info@rawhaenterprise.com](mailto:info@rawhaenterprise.com)

### 3. Owner

**CHAIRMAN & PROPRIETOR**

*Md. Sowmik Howlader*

### BOARD OF ADVISORS



### Rawha Enterprise

+880 1716-381891

rawhaenterprise@gmail.com

Road:19/3 , Kakrail,, House: Rahman Lucid Tower, Level: 3, Flat No: D-3, Kakrail,  
P.O.: Shantinagar, P.S.: Palton, Dhaka-1000.

www.rawhaenterprise.com

info@rawhaenterprise.com



**Rawha**



#### 4. ABOUT US

Rawha Enterprise started business journey in 2015 with a team of talented professionals and it is officially formed in 2025; as a Proprietorship Company: **Rawha Enterprise** registered by “Dhaka City Corporation”, Government of Bangladesh. It has become a remarkable Supply, Tech Giants and engineering solution provider with the key resources of highly experts, engineers and experienced professionals.

The company's motto is "**LOVE YOUR MOTHER & LOVE YOUR COUNTRY**," reflecting its determination to overcome obstacles and deliver quality and professionalism. Every employee is committed to providing their best work, ensuring high client satisfaction. The company believes in achieving commercial goals while maintaining moral and ethical standards through hard work and prioritizing customer satisfaction. Our core services encompass a broad range of Supply, Goods, Engineering solutions & Services, emphasizing efficiency, productivity, and growth.

Rawha Enterprise began with a focus on Technology, we focused on developing promising next-generation future in professional sector. We should expand its business portfolio through continuous new development through first-class core technology convergence and integration, while at the same time fostering the next-generation growth business and moving forward as a leader in the technology industry.

#### 5. WHO WE ARE

Rawha Enterprise is a dynamic and diversified company committed to delivering excellence across multiple industries. Rawha Enterprise is a multidisciplinary Supply, Goods, Engineering solutions, urban and regional design, planning, implementation, architectural and engineering consulting company & Services.

We provide you with an integrated approach to reliable project delivery in the evolving globalized world. Proactive rather than reactive, we are at the forefront of new specialties and advantageous alliances. We are here to enhance people's lifestyle and the economy through our services. We specialize in providing top-tier solutions and services.

Our adaptability and the solid communication between branches mean we deliver results against all odds and external challenges. The level of service and anticipation of market trends are what shape us.

#### **Rawha Enterprise**

+880 1716-381891

rawhaenterprise@gmail.com

Road:19/3 , Kakrail,, House: Rahman Lucid Tower, Level: 3, Flat No: D-3, Kakrail,  
P.O.: Shantinagar, P.S.: Palton, Dhaka-1000.

www.rawhaenterprise.com

info@rawhaenterprise.com





**Rawha**



## 6. WHY WE ARE

Rawha Enterprise is recognized as a leading Supply, Goods, Engineering solutions, urban and regional design, planning, implementation, architectural and engineering consulting company & Services provider in Bangladesh and sectors covered such as Construction Materials Supplier, Labour Supply, Electrical & Power, Renewable Energy, Consultancy, Information Technology Enabled Services (ITES), Networking and Safety & Security etc.

We are dedicated to making sure you are satisfied no matter how large or small your project is. We also focus on client objectives & business needs. Hence, we give high efforts & special attention to the client's necessity to fulfill the business requirements.

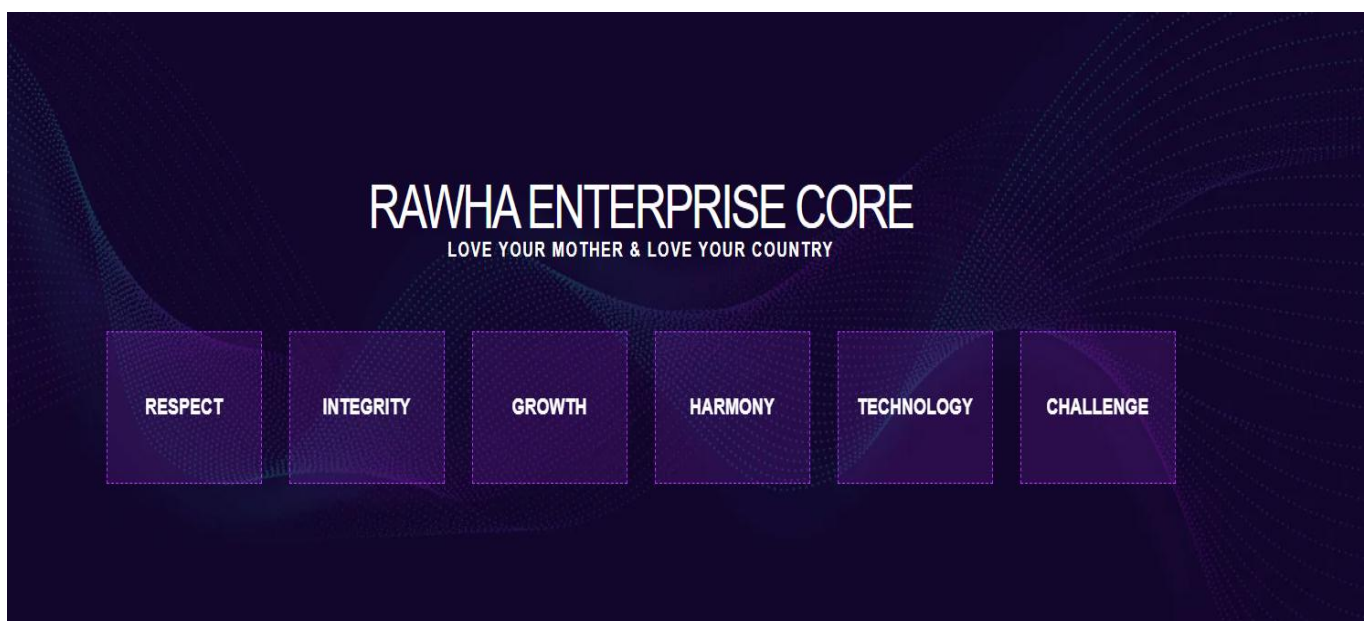
## 7. MISSION

To support clients in reaching their development objectives by offering cutting-edge, value-added technological services that will enable them to set out on a singular path of excellence and progress.

## 8. VISION

To encourage the ongoing and sustainable growth of organizations and businesses via involvement, creativity, and a supportive environment as they set out on a road of unparalleled quality and advancement of Technology.

## 9. CORE VALUE



### Rawha Enterprise

+880 1716-381891

rawhaenterprise@gmail.com

Road:19/3 , Kakrail,, House: Rahman Lucid Tower, Level: 3, Flat No: D-3, Kakrail,  
P.O.: Shantinagor, P.S.: Palton, Dhaka-1000.

www.rawhaenterprise.com

info@rawhaenterprise.com

## 10. COMPLIANCE

<ul style="list-style-type: none"> <li>Quality Management System (QMS)</li> </ul>	Yes
<ul style="list-style-type: none"> <li>Electrical ABC Supervisory License</li> </ul>	Yes

## 11. OUTSTANDING CLIENT SERVICE

Simply put, when our clients are successful, we are successful. We have a long track record of making our clients our highest priority – they deserve our best, and we give it to them. Our approach is straightforward – listen carefully, respond quickly, use our talent and experience to accomplish our clients’ goal.

## 12. WHAT WE DO

- **CONSTRUCTION MATERIALS SUPPLIER**
- **LABOUR SUPPLY**
- **ELECTRICAL & POWER**
- **RENEWABLE ENERGY**
- **CONSULTANCY**
- **INFORMATION TECHNOLOGY ENABLED SERVICES (ITES)**
- **NETWORKING**
- **SAFETY & SECURITY**

### Rawha Enterprise

+880 1716-381891

rawhaenterprise@gmail.com

Road:19/3 , Kakrail,, House: Rahman Lucid Tower, Level: 3, Flat No: D-3, Kakrail,  
P.O.: Shantinagor, P.S.: Palton, Dhaka-1000.

www.rawhaenterprise.com

info@rawhaenterprise.com





**Rawha**

## Our Service



LOVE YOUR MOTHER  
&  
LOVE YOUR COUNTRY

### 12.1 Construction Materials Supplier

Construction materials are essential components used in building and infrastructure projects, including cement, steel, bricks, tiles, and insulation. **RAWHA ENTERPRISE** is a leading construction materials supplier in Bangladesh, committed to providing top-notch materials that ensure durability, safety, and aesthetic appeal.

High-quality construction/building materials ensure the longevity and safety of buildings, making them a critical part of any construction project. With a robust supply chain and efficient logistics, we ensure timely delivery to your project site, regardless of location. Call us now at **+880 1716-381897** to discuss your requirements. Types of building materials that are used in construction

We offer an extensive range of high-quality construction materials in Bangladesh to meet the diverse needs of our clients. Whether you are working on a residential, commercial, or industrial project, you can rely on **RAWHA ENTERPRISE** for:



**Steel**



**Cement**



**Concrete**



**Stone**



**Sand**



**Aggregates**



**Blocks**



**Bricks**



**Binding Wire**



**Glass**



**Thai & Aluminium**



**Wood**

### **Rawha Enterprise**

+880 1716-381891

[www.rawhaenterprise.com](http://www.rawhaenterprise.com)

[rawhaenterprise@gmail.com](mailto:rawhaenterprise@gmail.com)

[info@rawhaenterprise.com](mailto:info@rawhaenterprise.com)

Road:19/3 , Kakrail,, House: Rahman Lucid Tower, Level: 3, Flat No: D-3, Kakrail,  
P.O.: Shantinagar, P.S.: Palton, Dhaka-1000.







**Rawha**

## Our Service



LOVE YOUR MOTHER  
&  
LOVE YOUR COUNTRY

### 12.2 Labour Supply

#### Construction labour supply services in Bangladesh

Construction labour supply involves providing skilled and unskilled workers to construction sites, ensuring that projects are completed efficiently and to high standards. It is crucial for the smooth execution of construction projects, offering flexibility and a reliable workforce tailored to specific project needs.

At **RAWHA ENTERPRISE**, we deliver top-tier construction labour supply services in Bangladesh. Our approach includes understanding the unique requirements of each project, recruiting and training skilled workers, and ensuring strict compliance with safety standards.

#### Our construction labour supply process

Discover the seamless securing of skilled construction labour with Rawha Enterprise. From understanding your project requirements to rigorous recruitment and thorough training, we ensure a reliable workforce customized to your needs.



##### Understanding your needs

Our process begins with understanding your project requirements. We work with you to determine the type and number of workers, needed skills, and project duration.



##### Recruiting the best talent

Once we understand your needs, we start recruiting. Our network and rigorous criteria ensure we hire top talent, conducting background checks and skill assessments for quality and reliability.



##### Training and orientation

Before deploying workers, we provide comprehensive training, including safety protocols, project-specific instructions, and familiarization with your worksite's rules, ensuring readiness.



##### Ongoing support and management

Our quality commitment extends beyond recruitment. We provide ongoing support to ensure our workers perform at the highest standards, addressing any issues promptly for smooth operations.

#### **Rawha Enterprise**

+880 1716-381891

rawhaenterprise@gmail.com

Road:19/3 , Kakrail,, House: Rahman Lucid Tower, Level: 3, Flat No: D-3, Kakrail,  
P.O.: Shantinagar, P.S.: Palton, Dhaka-1000.

www.rawhaenterprise.com

info@rawhaenterprise.com





**Rawha**

## Our Service



LOVE YOUR MOTHER  
&  
LOVE YOUR COUNTRY

### 12.3 ELECTRICAL & POWER

#### Electrical Services Overview

Our comprehensive electrical services encompass the full spectrum of power systems engineering, installation, and maintenance for both industrial and commercial applications. We specialize in the following:

<p><b>Electrical Diagram, Design &amp; Planning:</b> Precise schematic development and layout planning for reliable and code-compliant electrical infrastructure.</p>	
<p><b>Substation Design &amp; Planning:</b> Custom design of high- and low-voltage substations, including equipment selection, layout optimization, and safety integration.</p>	
<p><b>Switchgear &amp; Protection Systems:</b> Installation and maintenance of switchgear, relays, and protective devices to ensure system safety and operational integrity.</p>	
<p><b>PAC &amp; AC Maintenance &amp; Repairs:</b> Routine service and emergency repairs of power and air conditioning units for consistent energy efficiency.</p>	
<p><b>Circuit Breaker &amp; Distribution Systems:</b> Supply, installation, testing, and maintenance of circuit breakers, panels, and distribution boards.</p>	



#### **Rawha Enterprise**

+880 1716-381891

rawhaenterprise@gmail.com

Road:19/3 , Kakrail,, House: Rahman Lucid Tower, Level: 3, Flat No: D-3, Kakrail,  
P.O.: Shantinagar, P.S.: Palton, Dhaka-1000.

www.rawhaenterprise.com

info@rawhaenterprise.com





**Rawha**

## Our Service



LOVE YOUR MOTHER  
&  
LOVE YOUR COUNTRY

### 12.3 ELECTRICAL & POWER

<p><b>Lightning Protection Systems:</b> Design and implementation of lightning arrestors and grounding systems to safeguard structures and electrical networks.</p>	
<p><b>Energy Management System (EMS):</b> Integration of smart EMS solutions to monitor, control, and optimize energy usage across facilities.</p>	
<p><b>Generator/UPS/AVR Maintenance &amp; Repairs:</b> Full servicing of backup power systems to guarantee uninterrupted operations during outages.</p>	
<p><b>Electrical Consulting &amp; Advisory:</b> Expert consultancy on system upgrades, energy efficiency, compliance, and power quality analysis.</p>	
<p><b>Electrical Installation, Support, Maintenance &amp; Repairs:</b> Turnkey electrical installation services followed by comprehensive support and upkeep for sustained performance.</p>	



#### Rawha Enterprise

+880 1716-381891

rawhaenterprise@gmail.com

Road:19/3 , Kakrail,, House: Rahman Lucid Tower, Level: 3, Flat No: D-3, Kakrail,  
P.O.: Shantinagar, P.S.: Palton, Dhaka-1000.

www.rawhaenterprise.com

info@rawhaenterprise.com



**Rawha**

## Our Service



LOVE YOUR MOTHER  
&  
LOVE YOUR COUNTRY





### 12.4 RENEWABLE ENERGY

#### Renewable Energy Solutions & Service

We provide comprehensive, innovative, and sustainable energy solutions tailored to meet the needs of residential, commercial, and industrial clients. Our services cover the full spectrum of modern energy systems, including:

**Solar Energy & Inverter Solutions:** Design, supply, and installation of solar power systems for efficient and clean energy generation.

#### Solar Energy

<p><b>Photovoltaic Solar Energy:</b> This converts sunlight directly into electricity using solar panels made of semiconductor materials (usually silicon). It's widely used for residential, commercial, and utility-scale power generation.</p>	
<p><b>Passive Solar Energy:</b> This design strategy uses building architecture to collect, store, and distribute solar heat naturally, without mechanical systems. Common techniques include south-facing windows, thermal mass (like concrete or brick), and proper insulation.</p>	
<p><b>Solar Thermal Energy:</b> Unlike photovoltaics, this method captures solar heat to produce hot water or steam. It's commonly used in water heating systems and solar power plants.</p>	
<p><b>Monocrystalline Solar Panels:</b> Made from a single continuous crystal structure, these panels are known for high efficiency and sleek design. They perform better in low-light conditions and take up less space.</p>	



#### **Rawha Enterprise**

+880 1716-381891

rawhaenterprise@gmail.com

Road:19/3 , Kakrail,, House: Rahman Lucid Tower, Level: 3, Flat No: D-3, Kakrail,  
P.O.: Shantinagar, P.S.: Palton, Dhaka-1000.






www.rawhaenterprise.com

info@rawhaenterprise.com



## Our Service

### 12.4 Solar Energy

<p><b>Polycrystalline Solar Panels:</b> These are made from silicon fragments melted together. They are generally less expensive but slightly less efficient than monocrystalline panels.</p>	
<p><b>Biohybrid Solar Cell:</b> A newer type of solar cell that integrates biological materials (like photosynthetic proteins) with traditional semiconductor technology to mimic natural photosynthesis. Still largely in research and development.</p>	
<p><b>Concentrated Solar Energy (CSP):</b> Uses mirrors or lenses to concentrate sunlight onto a small area to generate heat, which then drives a turbine to produce electricity. Ideal for large-scale solar farms in sunny regions.</p>	
<p><b>Solar Electricity:</b> A general term for electricity produced from solar energy, typically through photovoltaic systems or CSP technologies.</p>	
<p><b>Water Heating Solar Energy:</b> Uses solar collectors (like flat-plate or evacuated tube collectors) to heat water for domestic or commercial use. It's one of the oldest and most cost-effective solar applications.</p>	





**Rawha**

## Our Service



LOVE YOUR MOTHER  
&  
LOVE YOUR COUNTRY

### 12.4 Solar & Inverter Solutions

Solar & inverter solutions refer to integrated systems that provide clean, reliable, and often independent electricity using solar panels and power inverters. These services typically include the design, installation, and maintenance of:

**Solar Panels:** Devices that convert sunlight into electrical energy.

**Inverters:** Equipment that converts the DC (direct current) power generated by solar panels into AC (alternating current) power used by most home and commercial appliances.

**Battery Storage (optional)** – To store excess solar energy for use during nighttime or power outages.

**System Monitoring & Support** – Tools and services to track energy production, system health, and offer troubleshooting. These solutions are popular for homes, businesses, and off-grid areas looking to reduce electricity bills, minimize environmental impact, and gain energy independence.



#### **Rawha Enterprise**

+880 1716-381891

[www.rawhaenterprise.com](http://www.rawhaenterprise.com)

[rawhaenterprise@gmail.com](mailto:rawhaenterprise@gmail.com)

[info@rawhaenterprise.com](mailto:info@rawhaenterprise.com)

Road:19/3 , Kakrail,, House: Rahman Lucid Tower, Level: 3, Flat No: D-3, Kakrail,  
P.O.: Shantinagar, P.S.: Palton, Dhaka-1000.





**Rawha**

## Our Service



LOVE YOUR MOTHER  
&  
LOVE YOUR COUNTRY

### 12.4 Solar & Inverter Solutions

We provide comprehensive, innovative, and sustainable energy solutions tailored to meet the needs of residential, commercial, and industrial clients. Our services cover the full spectrum of modern energy systems, including:

<p><b><u>Renewable Energy Solutions:</u></b> Custom renewable energy plans utilizing solar, wind, and hybrid technologies.</p>	
<p><b><u>Battery Banks &amp; Energy Storage Systems (ESS):</u></b> Reliable energy storage systems, including advanced battery banks, for uninterrupted power supply.</p>	
<p><b><u>Backup Battery Systems:</u></b> Installation and management of backup systems to ensure energy availability during outages.</p>	
<p><b><u>Expert:</u></b> Guidance to help clients navigate energy transition, improve efficiency, and reduce costs.</p>	
<p><b><u>Renewable Energy Products Installation, Support, Maintenance &amp; Repairs:</u></b> End-to-end service for all Renewable Energy products to ensure optimal performance and longevity.</p>	

Our mission is to empower our clients with sustainable, cost-effective energy solutions while ensuring reliability, performance, and long-term value.



#### **Rawha Enterprise**

+880 1716-381891

rawhaenterprise@gmail.com

Road:19/3 , Kakrail,, House: Rahman Lucid Tower, Level: 3, Flat No: D-3, Kakrail,  
P.O.: Shantinagar, P.S.: Palton, Dhaka-1000.

[www.rawhaenterprise.com](http://www.rawhaenterprise.com)

info@rawhaenterprise.com





**Rawha**

## Our Service



LOVE YOUR MOTHER  
&  
LOVE YOUR COUNTRY

### 12.5 CONSULTANCY

We are a multidisciplinary consultancy firm committed to delivering comprehensive solutions across diverse sectors. Our expertise spans the entire project lifecycle—from initial research and feasibility analysis to engineering design, implementation, and ongoing support. Our services include:

#### Consultancy Services

<p><b>Business Requirements Research, Development, Analysis &amp; Assessment:</b> We help organizations define, refine, and align their business goals through in-depth analysis and strategic planning.</p>	
<p><b>Project Management, Planning &amp; Design:</b> Our project managers and designers ensure efficient execution and meticulous planning tailored to client needs.</p>	
<p><b>Implementation and Supervision:</b> We oversee the deployment of projects to ensure quality, compliance, and on-time delivery.</p>	
<p><b>Goods Installation, Support, Maintenance, and Repairs:</b> From setup to post-installation service, we provide reliable technical support and maintenance solutions.</p>	
<p><b>Advisory &amp; Consulting Services:</b> Our industry experts offer informed, practical advice to guide critical business decisions.</p>	
<p><b>Construction and Implementation:</b> We manage construction activities from blueprint to build, ensuring seamless integration and quality results.</p>	



#### **Rawha Enterprise**

+880 1716-381891

rawhaenterprise@gmail.com

Road:19/3 , Kakrail,, House: Rahman Lucid Tower, Level: 3, Flat No: D-3, Kakrail,  
P.O.: Shantinagar, P.S.: Palton, Dhaka-1000.

www.rawhaenterprise.com

info@rawhaenterprise.com



**Rawha**

## Our Service



LOVE YOUR MOTHER  
&  
LOVE YOUR COUNTRY

### 12.5 Consultancy Services

<p><b>Training and Development:</b> We empower your team through targeted training programs, enhancing skillsets and operational capabilities.</p>	
<p><b>AMC (Annual Maintenance Contract) Services:</b> We offer customized AMC plans for consistent system uptime and performance.</p>	
<p><b>EPC Consulting (Engineering, Procurement, and Construction):</b> Our end-to-end EPC consulting covers all phases of large-scale infrastructure projects.</p>	
<p><b>Engineering Services:</b> We provide innovative and efficient engineering solutions tailored to your specific industry.</p>	
<p><b>Calibration and Measurement:</b> Precision and compliance are guaranteed with our certified calibration and measurement services.</p>	

Our mission is to be a trusted partner in your success, delivering excellence through innovation, experience, and client-centric solutions.

#### Rawha Enterprise

+880 1716-381891

rawhaenterprise@gmail.com

Road:19/3 , Kakrail,, House: Rahman Lucid Tower, Level: 3, Flat No: D-3, Kakrail,  
P.O.: Shantinagar, P.S.: Palton, Dhaka-1000.

www.rawhaenterprise.com

info@rawhaenterprise.com





**Rawha**

## Our Service



LOVE YOUR MOTHER  
&  
LOVE YOUR COUNTRY

### 12.6 INFORMATION TECHNOLOGY ENABLED SERVICES (ITES)

We are a forward-thinking IT Enabled Services (ITES) company committed to delivering high-quality digital solutions that empower businesses across industries. By leveraging cutting-edge technologies and a customer-centric approach, we help organizations streamline operations, enhance visibility, and drive sustainable growth.

#### ITES

<p><b>GIS &amp; Web-GIS Mapping:</b> Utilize geographic intelligence to power smarter decision-making. Our GIS solutions enable interactive spatial analysis, custom map creation, and integration with web platforms.</p>	
<p><b>Digital Land Survey:</b> Accurate and efficient land surveying using modern tools like drones, GPS, and LiDAR for real estate, urban planning, and infrastructure development.</p>	
<p><b>Email &amp; SMS Marketing:</b> Engage your audience with targeted and automated marketing campaigns. Our platform ensures timely delivery, high open rates, and measurable ROI.</p>	
<p><b>Digital Marketing Suite Comprehensive services including:</b></p> <ul style="list-style-type: none"> <li>A. SEO</li> <li>B. Content Marketing</li> <li>C. Social Media Management</li> <li>D. Affiliate Marketing</li> </ul>	
<p><b>Web &amp; Mobile Application Development:</b> Custom development of responsive websites and mobile apps across platforms—iOS, Android, and cross-platform solutions with robust backend integration.</p>	



#### **Rawha Enterprise**

+880 1716-381891

rawhaenterprise@gmail.com

Road:19/3 , Kakrail,, House: Rahman Lucid Tower, Level: 3, Flat No: D-3, Kakrail,  
P.O.: Shantinagar, P.S.: Palton, Dhaka-1000.

www.rawhaenterprise.com

info@rawhaenterprise.com



**Rawha**

## Our Service



LOVE YOUR MOTHER  
&  
LOVE YOUR COUNTRY

### 12.6 ITES

<p><b>Cyber Security Services:</b> Protect your data and IT infrastructure with our end-to-end cybersecurity solutions, including threat assessment, vulnerability management, and incident response.</p>	
<p><b>Cloud Services Harness the power of the cloud with deployment and management on platforms like:</b>            Microsoft Azure            Amazon Web Services (AWS)            Google Cloud Platform (GCP)</p>	
<p><b>Custom Software Development:</b> Our custom software development solutions are designed specifically to fit your unique requirements. Whether you need a desktop application, mobile app, or cloud-based system, we build software that aligns perfectly with your goals and workflows.</p>	
<p><b>Software Security Services:</b> Security is at the core of our development process. We offer comprehensive software security services, including vulnerability assessments, code audits, and compliance checks, to safeguard your applications against evolving cyber threats.</p>	
<p><b>Ongoing Support and Maintenance:</b> Our commitment doesn't end at deployment. We offer reliable support and maintenance services to ensure your software continues to perform optimally. From updates and patches to performance monitoring and troubleshooting, we've got you covered.</p>	
<p><b>Software Consulting:</b> Leverage our industry expertise to make informed technology decisions. Our software consulting services help you plan, strategize, and implement the best software solutions to improve efficiency, reduce costs, and support business growth.</p>	



### Rawha Enterprise

+880 1716-381891

rawhaenterprise@gmail.com

Road:19/3 , Kakrail,, House: Rahman Lucid Tower, Level: 3, Flat No: D-3, Kakrail,  
P.O.: Shantinagar, P.S.: Palton, Dhaka-1000.

www.rawhaenterprise.com

info@rawhaenterprise.com





**Rawha**

## Our Service



LOVE YOUR MOTHER  
&  
LOVE YOUR COUNTRY

### 12.7 NETWORKING

We specialize in delivering comprehensive networking solutions tailored to meet the evolving needs of modern businesses. From high-performance datacenter infrastructure to secure cloud networking, our expert team ensures your network is efficient, scalable, and secure.

<b>Datacenter &amp; Networking Design &amp; Development:</b> End-to-end design and deployment of data centers and network architecture for optimal performance and reliability.	
<b>Switching and Routing:</b> Implementation and optimization of Layer 2/3 network switching and routing to ensure seamless data flow.	
<b>LAN/WAN Solutions:</b> Reliable and scalable Local and Wide Area Network solutions tailored to your organizational requirements.	
<b>Wireless Networking (WLAN):</b> Secure and high-speed wireless network setups for indoor and outdoor environments.	
<b>Network Monitoring, Security &amp; Firewall Systems:</b> Proactive network monitoring and robust cybersecurity measures, including next-gen firewalls and threat detection.	
<b>Cloud Networking:</b> Integration and management of cloud-based network infrastructures to support remote work and hybrid models.	
<b>Networking Goods Installation, Support, Maintenance &amp; Repairs:</b> Hardware and equipment services ensuring smooth operation and minimal downtime through expert support and timely repairs.	



#### Rawha Enterprise

+880 1716-381891

rawhaenterprise@gmail.com

Road:19/3 , Kakrail,, House: Rahman Lucid Tower, Level: 3, Flat No: D-3, Kakrail,  
P.O.: Shantinagar, P.S.: Palton, Dhaka-1000.

www.rawhaenterprise.com

info@rawhaenterprise.com



**Rawha**

## Our Service



LOVE YOUR MOTHER  
&  
LOVE YOUR COUNTRY

### 12.8 SAFETY & SECURITY

We provide a comprehensive range of cutting-edge Safety and Security solutions tailored to meet the needs of modern businesses, institutions, and infrastructures. Our services ensure seamless protection, surveillance, access control, and facility management—designed to enhance operational efficiency and safeguard people and assets.

#### SAFETY & SECURITY

<p><b>IP Camera &amp; Surveillance:</b> Advanced network-based surveillance systems for real-time monitoring, recording, and analysis to ensure 24/7 security.</p>	
<p><b>Access Control &amp; Time Attendance Terminal:</b> Robust systems for managing employee entry, tracking attendance, and restricting unauthorized access to sensitive areas.</p>	
<p><b>Meeting Room Management System:</b> Efficient scheduling and usage optimization tools for conference rooms, helping streamline operations and improve productivity.</p>	
<p><b>IP-based PA/VA System:</b> Networked Public Address and Voice Alarm systems for effective emergency communication and routine announcements across facilities.</p>	



#### **Rawha Enterprise**

+880 1716-381891

rawhaenterprise@gmail.com

Road:19/3 , Kakrail,, House: Rahman Lucid Tower, Level: 3, Flat No: D-3, Kakrail,  
P.O.: Shantinagar, P.S.: Palton, Dhaka-1000.

www.rawhaenterprise.com

info@rawhaenterprise.com





**Rawha**

## Our Service



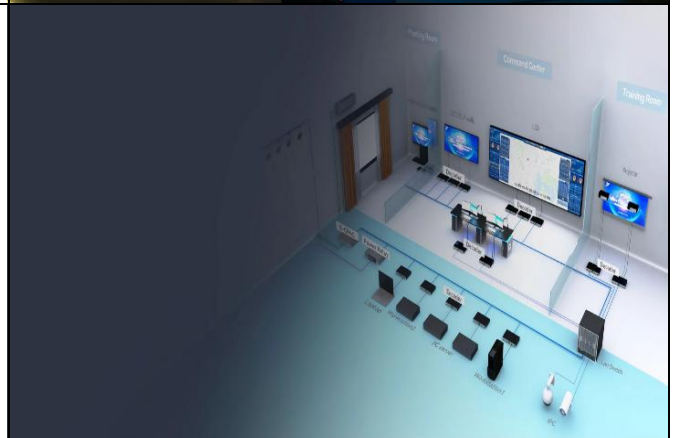
LOVE YOUR MOTHER  
&  
LOVE YOUR COUNTRY

### 12.8 SAFETY & SECURITY

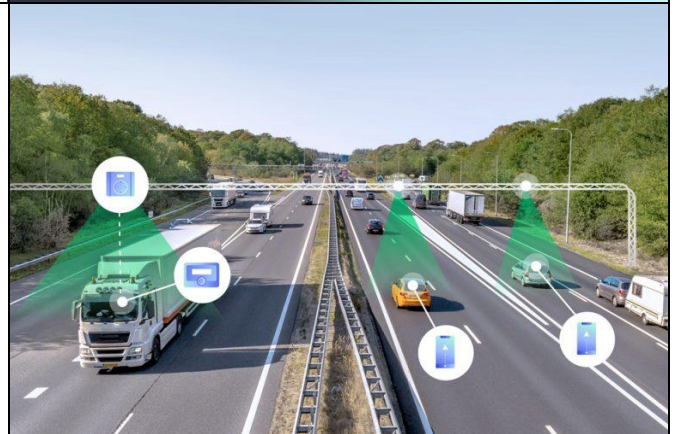
**Video Wall Display System:** High-resolution video walls for control rooms, command centers, and presentations, offering superior visual clarity and flexibility.



**IP-Based Video Wall Controller:** Scalable and responsive controllers to manage multi-source content across large video wall displays.



**Toll Automation System:** Streamlined toll collection and vehicle monitoring systems for highways, bridges, and gated communities.



**Car Parking Solution:** Smart parking systems for space management, access control, ticketing, and real-time monitoring of parking lots.



#### **Rawha Enterprise**

+880 1716-381891

rawhaenterprise@gmail.com

Road:19/3 , Kakrail,, House: Rahman Lucid Tower, Level: 3, Flat No: D-3, Kakrail,  
P.O.: Shantinagar, P.S.: Palton, Dhaka-1000.

www.rawhaenterprise.com

info@rawhaenterprise.com



**Rawha**

## Our Service



LOVE YOUR MOTHER  
&  
LOVE YOUR COUNTRY

### 12.8 SAFETY & SECURITY

**Audio Conference System:** Reliable audio-conferencing tools to ensure clear and uninterrupted communication for boardrooms and large meetings.



**Wireless Conference System:** Flexible and cable-free solutions for dynamic meeting environments, promoting ease of setup and mobility.



**Fire Detection & Alarm Monitoring System:** Early warning systems that detect fire or smoke, enabling prompt evacuation and rapid emergency response.



**Building Management System (BMS):** Centralized control systems for HVAC, lighting, power, and security to improve energy efficiency and maintain a safe environment.



#### **Rawha Enterprise**

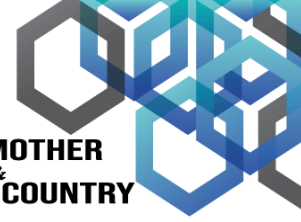
+880 1716-381891

rawhaenterprise@gmail.com

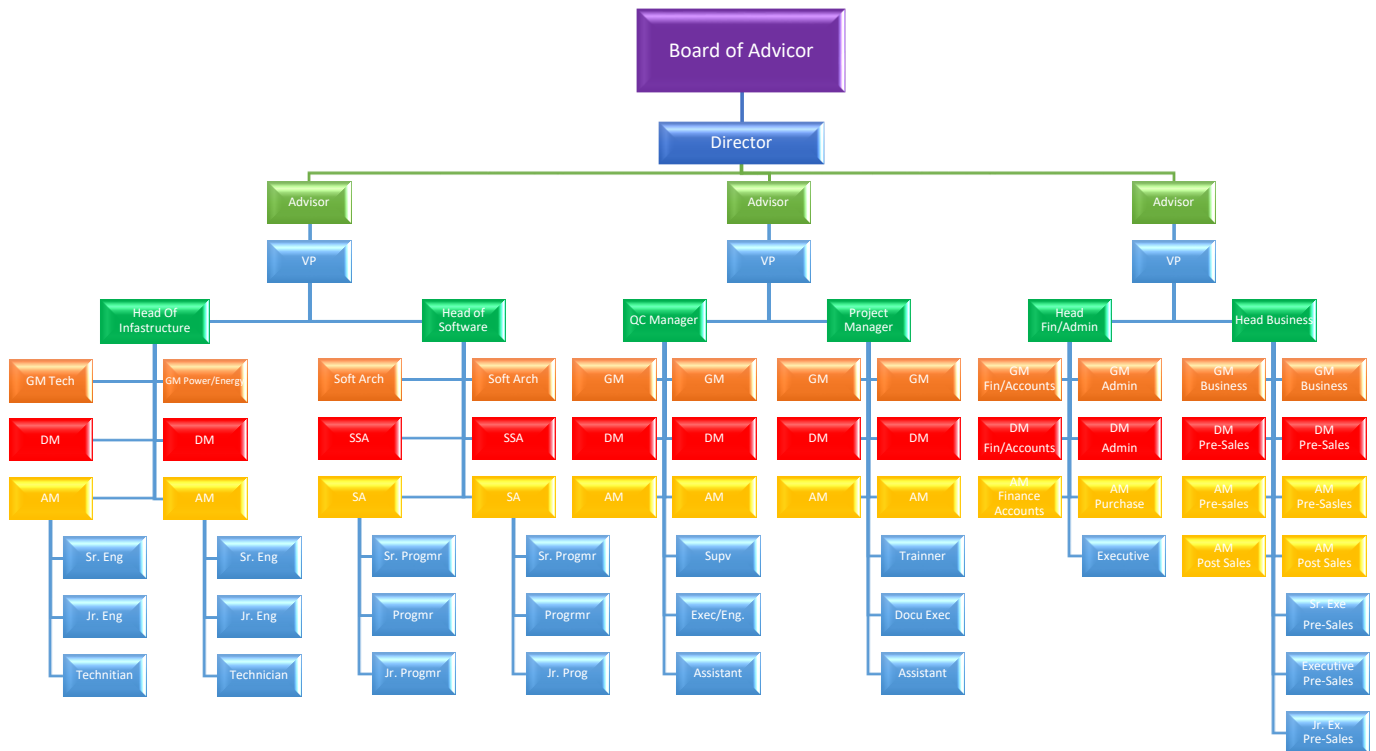
Road:19/3 , Kakrail,, House: Rahman Lucid Tower, Level: 3, Flat No: D-3, Kakrail,  
P.O.: Shantinagar, P.S.: Palton, Dhaka-1000.

www.rawhaenterprise.com

info@rawhaenterprise.com



### 13. ORGANOGRAM OF LEADERSHIP TEAM



### 14. TALENTED TEAM

A strategic vision does not define a company's success – its people do. We have some of the most talented and technically advanced team members in the industry – and our clients see that. All team members are encouraged to ask questions, make recommendations, and continuously improve systems and techniques. We encourage an environment of collaboration, knowledge sharing, and innovation, which translates to better service for our clients.

### 15. QUALITY ASSURANCE

We believe quality is the most important value in line with our business partner's and valuable customer's expectations with regards to the performance of our products, productivity, and after-sales services. We are dedicated to maintaining the highest standards of quality in everything we do. From product development to customer service, quality is non-negotiable.

<u><b>Innovation</b></u>	<u><b>Customer-centric</b></u>	<u><b>Integrity</b></u>
We embrace innovation as the driving force behind our success. We continually seek new and better ways to solve challenges and enhance our offerings.	Our clients are at the heart of our business. We are committed to understanding their unique needs and exceeding their expectations.	We uphold the principles of honesty, transparency, and ethical conduct in all our interactions, both within our organization and with our clients and partners.

#### Rawha Enterprise

+880 1716-381891

rawhaenterprise@gmail.com

Road:19/3 , Kakrail,, House: Rahman Lucid Tower, Level: 3, Flat No: D-3, Kakrail,  
P.O.: Shantinagar, P.S.: Palton, Dhaka-1000.

www.rawhaenterprise.com

info@rawhaenterprise.com





**Rawha**

LOVE YOUR MOTHER  
&  
LOVE YOUR COUNTRY



## 16. CUSTOMER

At **Rawha Enterprise**, we take pride in the strong relationships we've built with our clients. Our commitment to excellence and customer satisfaction has allowed us to serve a diverse range of businesses and organizations. As an extension of the Clients slide, bring in some highlight projects/products that you've developed. Get a star, or hero image for each one of them and add a small brief of what your company did.

Below is a selection of some of the esteemed clients we've had the privilege to work with:

### Privet Sector:


### Rawha Enterprise

+880 1716-381891

[www.rawhaenterprise.com](http://www.rawhaenterprise.com)

[rawhaenterprise@gmail.com](mailto:rawhaenterprise@gmail.com)

[info@rawhaenterprise.com](mailto:info@rawhaenterprise.com)

Road:19/3 , Kakrail,, House: Rahman Lucid Tower, Level: 3, Flat No: D-3, Kakrail,  
P.O.: Shantinagar, P.S.: Palton, Dhaka-1000.





**Rawha**

## 16. CUSTOMER

LOVE YOUR MOTHER  
&  
LOVE YOUR COUNTRY

### Privet Sector:


### Government Sector:


### NGO & Foundation Sector:


### Rawha Enterprise

+880 1716-381891

rawhaenterprise@gmail.com

Road:19/3 , Kakrail,, House: Rahman Lucid Tower, Level: 3, Flat No: D-3, Kakrail,  
P.O.: Shantinagar, P.S.: Palton, Dhaka-1000.

www.rawhaenterprise.com

info@rawhaenterprise.com



## 17. OUR EXPERTISE

We specialize in Engineering and 1<sup>st</sup> Class Contractor, Supply, Goods & Technology etc. services. Whether it is a specific service or product, we have a team of dedicated professionals with the knowledge and experience to deliver outstanding results. Our comprehensive range of services caters to a diverse clientele, from client types, e.g., small businesses to large corporations, to the following sectors:

- **Construction Materials Supply:** Reliable sourcing and delivery of high-quality construction materials tailored to project specifications and timelines.
- **Labour Supply:** Provision of skilled and semi-skilled manpower for construction, industrial, and technical projects.
- **Electrical & Power Solutions:** Comprehensive electrical systems and power solutions for commercial, industrial, and infrastructure needs.
- **Renewable Energy Technologies:** Implementation and integration of renewable energy solutions including solar, wind, and hybrid systems.
- **Consultancy Services:** Strategic consulting in engineering, energy, IT, and infrastructure projects, driving innovation and efficiency.
- **IT-Enabled Services (ITES):** Advanced IT solutions, process outsourcing, and support services to enhance business performance and scalability.
- **Networking Solutions:** Design, deployment, and maintenance of robust network infrastructures for seamless connectivity and communication.
- **Safety & Security Systems:** End-to-end safety and surveillance solutions, including access control, CCTV, fire detection, and alarm systems.

## 18. PROFESSIONALISM

We believe in professionalism and expect our team to provide the highest degree of skills, expertise, commitment, and accountability.

## 19. RESPONSIBILITY

We took full responsibility and worked day and night for productivity and performance. We work with full responsibility to fulfill our commitment.

## 20. TEAMWORK

Coming together is a beginning. Keeping together is progress. Working together is a success.



**Rawha**

LOVE YOUR MOTHER  
&  
LOVE YOUR COUNTRY

## 21. TRUST & TRANSPARENCY

The core value is to work on building trust. We believe in sincerity and open communication, accept constructive criticism, and encourage an objective driven decision - making process.

## 22. ON TIME DELIVERY

The fastest services we provide, the greatest satisfaction we deliver.

## 23. CLIENT SATISFACTION

Client satisfaction is our ultimate goal. We take pride in our track record of exceeding expectations and building long-lasting partnerships. Our commitment to understanding your unique requirements and delivering tailored solutions sets us apart.

## 24. OUR FUTURE

As we look ahead, we remain dedicated to pushing the boundaries of what is possible in our industry. We will continue to invest in research and development, staying at the forefront of emerging trends and technologies to better serve our clients. Thank you for considering **Rawha Enterprise** as your trusted partner. We look forward to the opportunity of working with you and contributing to your success.

## 25. OFFICE ADDRESS & FLOOR SPACE

### OFFICE/FLOOR SPACE

<u>Office</u>	<u>Address</u>	<u>Square Feet</u>
<b>Head Office</b>	Road:19/3 , Kakrail,, House: Rahman Lucid Tower, Level: 3, Flat No: D-3, Kakrail, Post Office: Shantinagor, Police Station: Palton, Dhaka-1000.	<b>1900 SFT</b>
<b>Store</b>	House: 105/A, Level: 5, Block: J, Kakrail, Shantinagor, Ramna Dhaka - 1000	<b>1500 SFT</b>

### **Rawha Enterprise**

+880 1716-381891

rawhaenterprise@gmail.com

Road:19/3 , Kakrail,, House: Rahman Lucid Tower, Level: 3, Flat No: D-3, Kakrail, P.O.: Shantinagor, P.S.: Palton, Dhaka-1000.

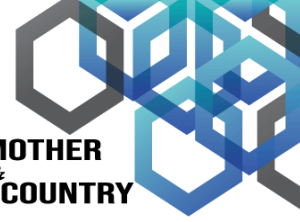
www.rawhaenterprise.com

info@rawhaenterprise.com



**Rawha**

LOVE YOUR MOTHER  
&  
LOVE YOUR COUNTRY



## 26. Rawha Enterprise Owner Identifications

### Identifications

Photo	National ID Card
	 
 <b>Md. Sowmik Hawlader</b> Chairman & Proprietor Rawha Enterprise	 <b>Company Seal</b> <b>Rawha Enterprise</b>

### Rawha Enterprise

+880 1716-381891

rawhaenterprise@gmail.com

Road:19/3 , Kakrail,, House: Rahman Lucid Tower, Level: 3, Flat No: D-3, Kakrail,  
P.O.: Shantinagar, P.S.: Palton, Dhaka-1000.

www.rawhaenterprise.com

info@rawhaenterprise.com





Rawha

## 27. COMPANY LEGAL DOCUMENTS

### 27.1 TRADE LICENSE

LOVE YOUR MOTHER  
&  
LOVE YOUR COUNTRY

**ঢাকা দক্ষিণ সিটি কর্পোরেশন**

www.dscc.gov.bd





**ই-ট্রেড লাইসেন্স**

লাইসেন্স ইস্যুর বিবরণ

ইস্যুর তারিখ : 28/08/2024  
ইস্যুর সময় : 11:59:44

লাইসেন্স নং : TRAD/DSCC/010621/2020

স্থানীয় সরকার (সিটি কর্পোরেশন) আইন, ২০০৯ (২০০৯ সনের ৬০ নং আইন) এর ধারা ৮৪-তে প্রদত্ত ক্ষমতাবলে সরকার প্রণীত আদেশ কর্তৃক তফসিল, ২০১৬ এর ১০ অনুচ্ছেদ অনুযায়ী ব্যবসা, বৃত্তি, পেশা বা শিল্প প্রতিষ্ঠানের উপর আরোপিত কর আদায়ের লক্ষ্যে নিম্নবর্ণিত ব্যক্তি প্রতিষ্ঠানের আনুকূলে অত্র ট্রেড লাইসেন্সটি ইস্যু করা হলো।

১। ব্যবসা প্রতিষ্ঠানের নাম	: রাওহা এন্টার প্রাইজ		
২। প্রতিষ্ঠানের মালিকের নাম	: মোঃ সৌমিক হাওলাদার		
৩। পিতা / স্বামীর নাম	: মৃতঃ মোঃ আঃ রহিম		
৪। মাতার নাম	: হাওলাদার		
৫। ব্যবসার প্রকৃতি	: মনা হাওলাদার		
৬। ব্যবসার ধরণ	: অন্যান্য - একক		
৭। প্রতিষ্ঠানের ঠিকানা	: ১ম শ্রেণীর ঠিকাদারি, সরবরাহকারী		
৮। অঞ্চল / বাজার শাখা	: ২৫/৬, শান্তিবাগ, শান্তিবাগ বাজার, আমেনা ভিলা, ঢাকা- ১২১৭	ওয়ার্ড / মার্কেট:	১২
এলাকা	: ২		
৯। এনআইডি/পাসপোর্ট/জন্ম নিব: নং	: ২৬৯৫৪৩৫০৮২৩৮৬	বিআইএন নং:	
ফোন	: ০১৭১৬৩৮১৮৯৭	ই-মেইল:	
১০। অর্থ বছর	: ২০২৪-২০২৫ (নবায়নকৃত)	ব্যবসা শুরুর তারিখ:	০৮/০৯/২০২০
১১। মালিকের বর্তমান ঠিকানা		মালিকের স্থায়ী ঠিকানা	
হোল্ডিং নং	: ২৫/৬	হোল্ডিং নং	
রোড নং		রোড নং	
গ্রাম / মহল্লা	: শান্তিবাগ, শান্তিবাগ বাজার,	গ্রাম / মহল্লা	: পুরনিতপাড়া
পোস্টকোড	: আমেনা ভিলা	পোস্টকোড	: বজ্রযোগিনী
থানা	: ১২১৭	থানা	: মুন্সীগঞ্জ সদর
জেলা	: ঢাকা	জেলা	: মুন্সীগঞ্জ
বিভাগ	: ঢাকা	বিভাগ	
১২। ট্রেড লাইসেন্স/নবায়ন ফি(বার্ষিক)			
লাইসেন্স/নবায়ন ফি	: ৬০০০	সাইনবোর্ড কর	: ৬৪০
সারচার্জ	: ০	ভ্যাট	: ৯৯৬
আয়কর / উৎসেধক	: ৩০০০	ফর্ম ফি	: ৫০
বকেয়া ( )	: ০		
সংশোধনী ফি	: ০.০০	সর্বমোট	: ১০৬৮৬.০০

অত্র ট্রেড লাইসেন্স এর মেয়াদ ৩০ শে জুন, ২০২৫ পর্যন্ত

  
লাইসেন্স ও বিজ্ঞাপন সুপারভাইজার



  
কর কর্মকর্তা

### Rawha Enterprise

+880 1716-381891

www.rawhaenterprise.com

rawhaenterprise@gmail.com

info@rawhaenterprise.com

Road:19/3, Kakrail,, House: Rahman Lucid Tower, Level: 3, Flat No: D-3, Kakrail,  
P.O.: Shantinagar, P.S.: Palton, Dhaka-1000.



Rawha

LOVE YOUR MOTHER  
&  
LOVE YOUR COUNTRY

## 27. COMPANY LEGAL DOCUMENTS

### 27.2 VAT REGISTRATION CERTIFICATE



**Government of the People's Republic of Bangladesh**  
**National Board of Revenue**

Mushak-2.3

Customs, Excise and VAT Commissionerate, Dhaka (South)  
Shegunbagicha Division

**Value Added Tax Registration Certificate**

This is to certify that the person whose details are given below is registered under  
Value Added Tax and Supplementary Duty Act, 2012 (Act No. 47 of 2012)

**BIN : 003275309-0208**

Name of the Entity	: RAWHA ENTERPRISE
Trading Brand Name	: N/A
Old BIN	: N/A
e-TIN	: 477865761557
Address	: 25/6, Shantibag, Shantibag Bazar, Amena Vila; Ramna PS; Dhaka-1217; Bangladesh
Issue Date	: 22/10/2020
Effective Date	: 18/10/2020
Type of Ownership	: Proprietorship
Major Area of Economic Activity	: Services, 1st Class Contractor...



This is a system generated certificate and doesn't require any signature

#### Rawha Enterprise

+880 1716-381891

rawhaenterprise@gmail.com



Road:19/3 , Kakrail,, House: Rahman Lucid Tower, Level: 3, Flat No: D-3, Kakrail,  
P.O.: Shantinagar, P.S.: Palton, Dhaka-1000.



www.rawhaenterprise.com

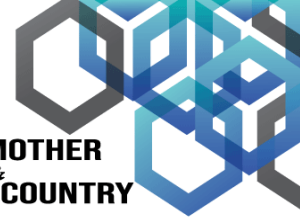


info@rawhaenterprise.com





Rawha



LOVE YOUR MOTHER  
&  
LOVE YOUR COUNTRY

## 27. COMPANY LEGAL DOCUMENTS

### 27.3 INCOME TAX CERTIFICATE



**Government of the People's Republic of Bangladesh**  
**National Board of Revenue**  
Income Tax Wing

**Income Tax Certificate**

**Description:**

- |  |   |
|--|---|
| 1. Name                                | : MD. SOWMIK HAWLADER                                     |
| 2. Father's Name                       | : Md. Abdur Rahim Hawlader                                |
| 3. Permanent Address                   | : Puruhitpara, Bajrajogini, Munshiganj Sadar, Munshiganj. |
| 4. Present Address                     | : 25/6, Shantibag, P/O:-Shantinagar, Dhaka-1000.          |
| 5. Person/Status                       | : Individual  |
| 6. E-Tax Payer's Identification Number | : 477865761557 /Taxes Circle-16, Dhaka.                   |
| 7. Business Identification Number      | : Not Applicable.   |

This is to certify that **MD. SOWMIK HAWLADER, Prop:-Rawha Enterprise** is an assessee of this Taxes Circle-16, Taxes Zone-01, Dhaka. His assessment has been completed for assessment year 2024-2025 U/S 180 & Tax paid in full.



*Mostafizur Rahman*  
26/02/2028

**(Md. Mostafizur Rahman)**  
Extra Assistant Commissioner of Taxes  
Taxes Circle-16, Taxes Zone-1, Dhaka.  
Ph: 2223390785.

### Rawha Enterprise

+880 1716-381891

[www.rawhaenterprise.com](http://www.rawhaenterprise.com)

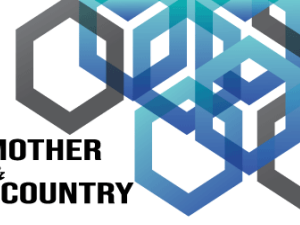
[rawhaenterprise@gmail.com](mailto:rawhaenterprise@gmail.com)

[info@rawhaenterprise.com](mailto:info@rawhaenterprise.com)

Road:19/3, Kakrail,, House: Rahman Lucid Tower, Level: 3, Flat No: D-3, Kakrail,  
P.O.: Shantinagar, P.S.: Palton, Dhaka-1000.



Rawha



LOVE YOUR MOTHER  
&  
LOVE YOUR COUNTRY

## 27. COMPANY LEGAL BANK DOCUMENTS

### 27.4 BANK SOLVENCY CERTIFICATE



Bijoy Nagar Branch

MBPLC/BIJOY/GB/2024/1261  
October 01, 2024.

#### To Whom It May Concern

This is to certify that **Md Sowmik Howlader** having address At 25/6, Shantibag Bazar, 2nd Floor Amena Villa, Shantibag, Dhaka had maintained Fixed Deposit Account bearing no 1410001579396 with us and the account has been closed on Sep 30, 2024.

This certificate has been issued at the request of the customer without any prejudice and obligation on the part of this bank or any of its officials.

We wish him in every success in coming future.

For Mercantile Bank PLC  
Bijoy Nagar Branch, Dhaka


  
**Manika Rani Acharjee**  
Senior Executive officer


  
**Mohammad Mozadded Ahmed**  
Assistant Vice President &  
Manager Operation

212, S.S Nazrul Islam Sharani, Dhaka-1000, Phone: 02-47118741, 47118742, 9586610  
FAX-8802-47118680, Website: [www.mblbd.com](http://www.mblbd.com), SWIFT: MBLBDDH020


#### Rawha Enterprise

+880 1716-381891

 [www.rawhaenterprise.com](http://www.rawhaenterprise.com)

 [rawhaenterprise@gmail.com](mailto:rawhaenterprise@gmail.com)

 [info@rawhaenterprise.com](mailto:info@rawhaenterprise.com)

 Road:19/3, Kakrail,, House: Rahman Lucid Tower, Level: 3, Flat No: D-3, Kakrail,  
P.O.: Shantinagar, P.S.: Palton, Dhaka-1000.



# Rawha

## Rawha Enterprise

☎ +880 1716-381 891

✉ rawhaenterprise@gmail.com

🌐 [www.rawhaenterprise.com](http://www.rawhaenterprise.com)

✉ [info@rawhaenterprise.com](mailto:info@rawhaenterprise.com)

Road:19/3 , Kakrail,, House: Rahman Lucid Tower, Level: 3, Flat No: D-3, Kakrail,  
P.O.: Shantinagor, P.S.: Palton, Dhaka-1000.